



**Arkendale, Coneythorpe & Clareton
Preliminary Trees & Hedges Project**

Report reference: R-2754-01

March 2017

Report Title: Arkendale, Coneythorpe & Clareton
Preliminary Trees & Hedges Project

Report Reference: R-2754-01

Written by Victoria Black FdSc Arb
Arboricultural Consultant
Michael Gane
Arboricultural Technician

QA review: Peter Brooks BSc (Hons), MA, MCIEEM, CEnv
Managing Director

Date 06.03.17
Revised 07.04.17
Revised 01.08.17



Unit A, 1 Station Road, Guiseley, Leeds, LS20 8BX
Phone: **01943 884451**
01943 879129

Email: admin@brooks-ecological.co.uk
www.brooks-ecological.co.uk
Registered in England Number 5351418



Contents

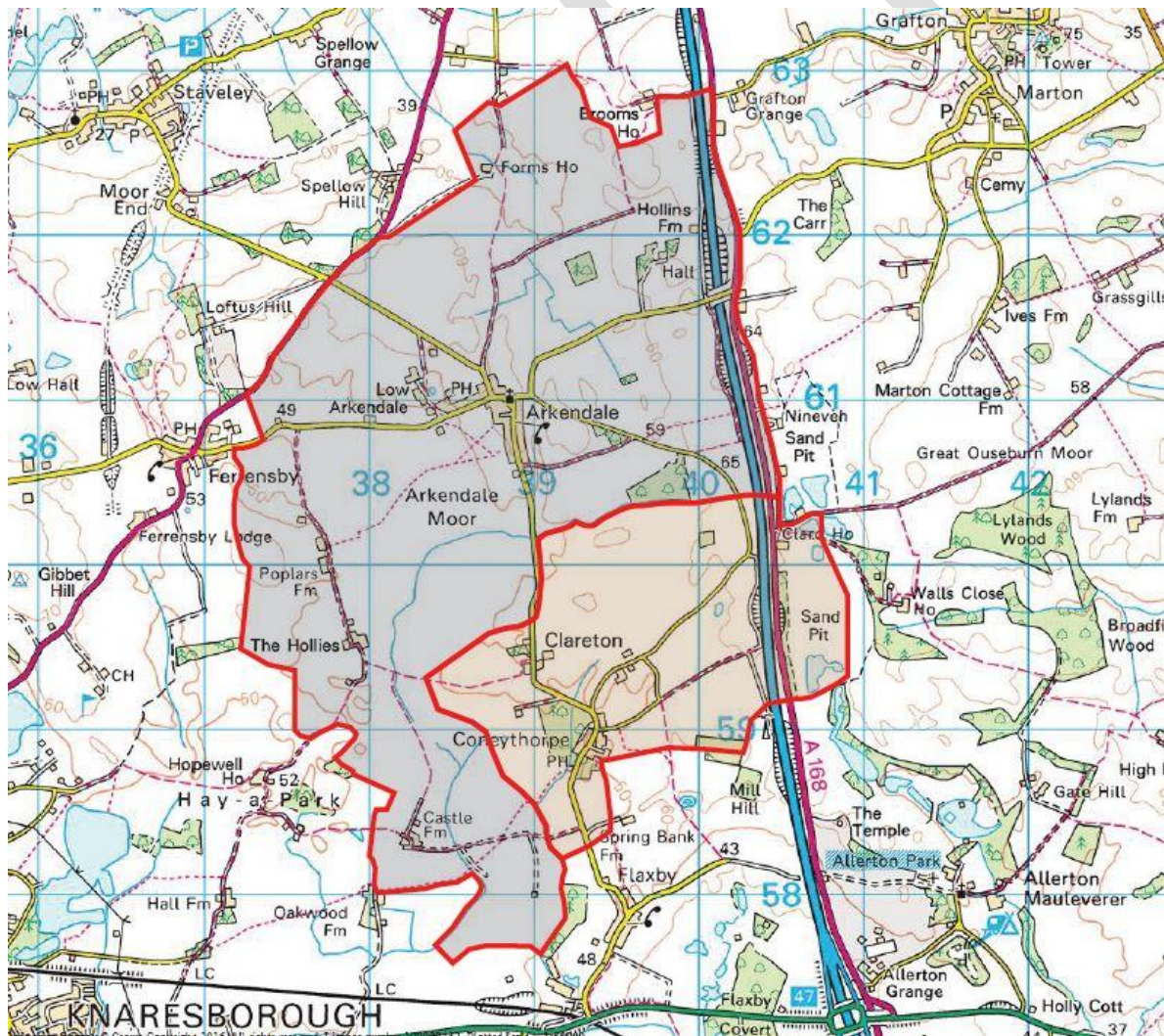
CONTENTS	3
INTRODUCTION	4
TREE ASSESSMENT AND RECOMMENDATIONS	5
LANDSCAPER CHARACTER ASSESSMENT	5
OVERALL LANDSCAPE CHARACTER	5
VILLAGE AND VILLAGE SETTING	6
ARKENDALE	6
CONEYTHORPE	8
CLARETON	8
RECOMMENDATIONS	9
IMPROVING LANDSCAPE QUALITY	12
HEDGE PLANTING AND INFILLING	13
ARKENDALE VILLAGE TREE PLANTING	14
BLUEBELL WOODS - ARKENDALE	15
CONEYTHORPE VILLAGE TREE PLANTING	16
COMMUNITY RESPONSE	16
APPENDIX 1: VISUAL IMPACT PLAN	18
APPENDIX 2: TREE PLANTING MASTERPLAN – ARKENDALE	19
APPENDIX 3: TREE PLANTING MASTERPLAN – CONEYTHORPE & CLARETON	20
APPENDIX 4: AVENUE TREE PLANTING – ARKENDALE	21
APPENDIX 5: AVENUE TREE PLANTING – ARKENDALE	22
APPENDIX 6: ARKENDALE TREE PLANTING	23
APPENDIX 7: TREE PLANTING – CONEYTHORPE VILLAGE GREEN	24
APPENDIX 8: BLUEBELL WOODS	25
APPENDIX 9: HEDGEROW PLANTING MASTERPLAN	26

Introduction

Purpose of the Report

1. Brooks Ecological has been appointed by Arkendale, Coneythorpe and Clareton Parish Council to help devise a tree and hedge management and planting strategy with a view to enhancing the parishes' landscape setting and quality. Where possible we hope to incorporate new tree and hedge planting, which can go some way to ameliorating key views of the newly constructed Allerton waste incinerator. This report is produced as an independent professional assessment of the opportunities to improve the local tree and hedge network and is intended to be a guide to help the local community target where best to spend a grant from Two Ridings Community Foundation.

Figure 1 Arkendale, Coneythorpe and Clareton Parish



Tree assessment and recommendations

2. A walkover survey was conducted within the parish boundaries with a view to assess the general condition of the tree population. Over all the trees appeared to be in good health and there were no hazardous or dangerous trees noted. No recommendations have been made for any remedial works.

Landscaper Character Assessment

3. To help understand how best to target the planting proposals the parishes were subject to a walkover and photographic survey to analyse the local landscape character. It is important to understand the landscape character to ensure that the proposals do not detract from landscapes already considered of high value or locally distinct and to find higher value areas of landscape, characterise these then borrow from them to improve areas which are degraded.

Overall Landscape Character

4. Arkendale, Coneythorpe and Clareton Parishes sit in a low lying gently undulating landscape lying between 50 and 60m above sea level. The landscape can be split into very broad zones of 'village and village setting' and 'open farmland'. Each has differing characters and differing constraints and opportunities. Visual amenity being a more pressing concern in the villages with the effects on agriculture being important in the open farmland.
5. Combining both village and open farmland characters, the Arkendale, Coneythorpe and Clareton landscape is assessed as being of relatively high quality with far reaching, mostly unspoilt rural views and smaller enclosed areas where there is an intimate and rural feel.

Figure 2 High value rolling landscape with good hedge and tree cover



6. These higher quality intimate areas contrast with the more open areas where long views uninterrupted can be seen spanning large arable fields with degraded hedgerow infrastructure and limited numbers of field trees. While openness can be seen as producing attractive landscape in places this character can locally exacerbate views of the incinerator.

Figure 3 Showing the most open areas of landscape characterised by large fields low to defunct hedges and largely uninterrupted long views.

From Google street view.



Village and Village Setting

Arkendale

7. Arkendale is essentially a linear village occupying a low landscape ridge and as such has far reaching views from many locations. Currently, Arkendale village is reasonably well tree'd with a range of recently planted species, ranging from immature trees with a small projected size (e.g. Rowans) and semi-mature/early mature fastigiate hornbeams. The northern entrance road into Arkendale, West Field Lane, is very well tree'd with some good amenity trees.
8. At present the majority of the treescape is somewhat scrappy, incoherent and urban in character due to the use of trees often seen in town or city centres.



Figure 4 shows a current View of Arkendale looking north.

9. A study of historic imagery shows that Arkendale was in the early 20th century, characterised by avenue planting of lime trees (*Tilia* sp.). They are shown as young specimens at the turn of the 20th century and fine mature trees by the 1940's. This approach produces a highly coherent avenues of trees which makes a very big impact on the village street scene. While this degree of tree cover may not be appropriate in today's setting we think that this presents a good theme to be explored in any replanting scheme. Focussing on repeated patterns of one species rather than mixes of trees with differing character and growth form.

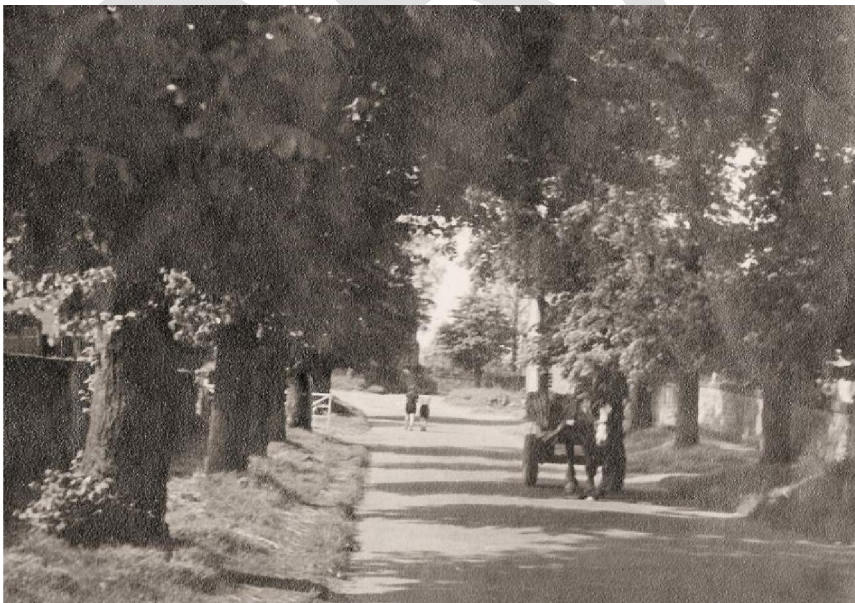


Figure 5 View of Arkendale in 1945 showing a mature avenue of limes

Arkendale village 1945 (Houseman's horse & cart)

10. The Mar to the north west of the village has a reasonably good tree cover, but are typical species found growing near water.

Coneythorpe

11. Coneythorpe differs in character from Arkendale being less linear and sited in a shallow depression centred around a triangular village green. This layout produces an extremely attractive familiar English village 'feel' A place where the green is central to the life and amenity of the village.
12. The green is not well tree'd but a large weeping willow makes a notable statement and in our opinion adds value to the village character.
13. The villages enclosed character reduces views out into the wider landscape. It is in a relatively well tree'd setting and has a backdrop to the north of a large area of fairly recent but maturing plantation woodland.



Clareton

14. This small hamlet lies on elevated gently undulating ground to the north east of Coneythorpe surrounded by large open fields with far reaching views in all directions. The immediate landscape is not characterised by significant tree cover.

Recommendations

Screening views

15. Full screening views of the waste facility will be a challenge due to the lie of the land in the Parish and the sheer height of the chimney and building. The best way to tackle the visual impact is to focus planting in areas where there is a key view and where planting individual trees in a range of distances from the receptor (the viewer or the house with view) can be accommodated. This will increase the depth of the view and focus the eyes on individual trees rather than the incinerator plant.
16. The figures below show what we assess as the key areas that suffer visually from the Incineration plant.

Figure 6 shows the areas worst affected in Arkendale, which includes the backs of the houses along Moor lane and the bridleway connecting Moor Lane to Spitlands Lane.



Figure 7 shows the areas affected the worst in Coneythorpe and Clareton including the backs of the houses at the bottom of Lidget lane, Brunton Lane and Shortsill Lane.



Figure 8 shows the view from the bridleway between Moor lane and Spitlands Lane. The proposed single tree planting is highlighted in green. The incineration plant is clearly visible through this and the chimney extends above these.



Figure 10 below shows the view from the back of the houses at the bottom of Lidget road. The Incineration plant is visually dominant from here. Individual tree planting along the closer field boundary would help to screen the plant, whilst keeping and enhancing the character of the landscape.



17. Staggered planting of trees along the field boundary around Coneythorpe has been proposed on the Tree Planting Masterplan to help screen the Incinerator from Shortsill Lane. This is the approach to Coneythorpe from the south.

Improving landscape quality

18. It is evident that there are many locations in the parishes which can be improved in terms of the quality of hedges and incorporation of new tree planting. The Tree Planting Masterplans and Hedgerow Planting Masterplan show our assessment of where it is felt that efforts can be focused.

Figure 11 The Bridleway between Spitlands Lane and Moor Lane. The landscape here is characterised by a largely continuous double hedge punctuated by mature hedgerow standards. This creates a strong continuous feature of high ecological value and visual amenity is a good theme for the further enhancement of the landscape value locally



Hedge planting and infilling

19. The hedging proposed to improve landscape quality will be a mixed range of native species in order to increase biodiversity and attractiveness. Key areas have been identified for hedge planting as per Appendix 9 - Hedgerow Planting Masterplan. These areas include sections where there is currently no hedging and also areas where there are gaps in existing hedges. Access to the fields for farming vehicles has been considered.

Arkendale Village Tree planting

Proposed Tree Planting

20. The area across from the Bluebell Public House could be improved with the planting of a Birch and some ornamental flowering trees to give winter /early spring interest. This will provide something of interest for residents throughout every season.
21. The avenue of trees along the main stretch of road in Arkendale is proposed to be reinstated. This could be planted with Tilia Cordata 'Greenspire' which is a tidy, upright growing variety of the species which will allow light to reach the houses and will be able to reach their maximum potential size without causing conflict. This will provide a reference to the past but with a variety of the original species that doesn't grow as large.
22. Crataegus Laevigata 'Pauls Scarlett' could be planted in an avenue in addition to the Lime. This tree will only reach up to approximately 6 metres and provide an avenue of pink/red flowers in May and good Autumn colour.
23. All trees proposed along the highway are to be planted with tree pits with careful design consideration given to available root space, root management, irrigation, drainage and aeration.
24. Existing Beech trees at the Southern entrance to the village can be mirrored within the verge on the other side of the road and extended to create an avenue leading into the village.

Tree Work

25. Sixteen trees are proposed to be removed. The early mature Hornbeam and Whitebeam to be replaced with a more suitable species.
26. A tree has been identified for removal at the intersection of Holgate Bank and Moor Lane due to its proximity to a house.
27. Seven Hornbeams and Whitebeam have been identified for removal along this avenue. The Hornbeams are growing very close to buildings and therefore their future potential is compromised. These should be replaced.
28. There have been recent concerns over the health of the group of 6 trees between PL23 and PL26. Their condition will be assessed and suitable replacements proposed if required.

Tree No	Species	Height (m)	Diameter	Description	Reason for removal
T1	Lime	5	220	Single stemmed tree. Recently been reduced.	Growing too close to building. Becoming a poor specimen.
T2	Hornbeam	13	370	Single stemmed tree. Growing in grass verge. No major visible defects.	Growing too close to building. Causing damage to adjacent property.
T3	Hornbeam	13	330	Single stemmed tree. Growing in grass verge. No major visible defects.	Growing too close to building. Causing damage to adjacent property.
T4	Ash	14	340	Single stemmed tree. Growing in grass verge. Growing into wall. Unbalanced. Scrappy tree.	Scrappy tree growing into adjacent boundary wall.
T5	Rowan	3	90	Single stemmed young tree. Growing in grass verge. No major visible defects.	Removal required for proposed Tree Planting Scheme.
T6	Rowan	4	110	Single stemmed young tree. Growing in grass verge. No major visible defects.	Removal required for proposed Tree Planting Scheme.
T7	Rowan	3	85	Single stemmed young tree. Growing in grass verge. No major visible defects.	Removal required for proposed Tree Planting Scheme.
T8	Rowan	4	90	Single stemmed young tree. Growing in grass verge. No major visible defects.	Removal required for proposed Tree Planting Scheme.
T9	Rowan	5	100	Single stemmed young tree. Growing in grass verge. No major visible defects.	Removal required for proposed Tree Planting Scheme.
T10	Rowan	5	130	Single stemmed young tree. Growing in grass verge. No major visible defects.	Removal required for proposed Tree Planting Scheme.
T11	Rowan	5	130	Single stemmed young tree. Growing in grass verge. No major visible defects.	Removal required for proposed Tree Planting Scheme.
G11	Whitebeam & Hornbeam	To 15	To 370	Single stemmed tree. Growing in grass verge. No major visible defects.	Too large for current location.
T12 Not shown on plan	Rowan	10	270	Single stemmed tree. Growing on grassed area outside Tiger Inn. No major visible defects.	Removal required for proposed Tree Planting Scheme.

29. Please refer to Appendix 4: Avenue Tree Planting & Proposed Tree Removal – Arkendale.

Bluebell Woods - Arkendale

30. It was evident while carrying out a walkover survey of Bluebell Woods that it was been used by local children. This was fantastic to see. It would be our recommendation that, with very minor understorey clearance, natural seating is positioned within the woods so it can be used by more diverse groups within the community. At present, there is a clear opening into the woods from Moor Lane. However, it would appear that there is an unofficial entrance being used along the bridleway. We would propose that, with very minor tree removal, this opening could be adopted as the new entrance sited away from the roadside.

31. Relevant signage is proposed along the boundaries of Bluebell Woods.
32. Bird and bat boxes have also been proposed.
33. Please refer to Appendix 8 – Bluebell Woods.

Coneythorpe Village Tree Planting

Proposed Tree Planting

34. The village green is used throughout the year for village events including the erection of marques and an open area of grass should be retained in order to accommodate events, and to maintain the village green character. There is a large mature Willow on the northern part of the green which in our opinion adds significant character to this village setting and although we noted that some residents wanted to see its removal we do not see any reason to support this; its retention is desirable. No remedial works have been recommended at present, however this tree should be re-inspected every two years to see if its condition is still acceptable.

Tree Work

35. A mature Sugar Maple tree, which was highlighted in the initial provided job brief, as a problematic tree for the local residents of Coneythorpe. It is recommended that a Tree Preservation Order application is submitted to the local council requesting its removal. If this application is successful a suitable replacement tree chosen by the Local Council should be planted. Please refer to Appendix 7 for location.

Community Response

36. A community Parish Council meeting was held on the 16th May in the Bluebell Inn. There were numerous questions and comment from members of the local community with regards to the scheme, and further letters and emails were received from three local households, and all have been taken into consideration. A second meeting took place on the 30th May 2017 at the Tiger Inn with Coneythorpe residents attending, and ten responses from members of the local community with regards to the scheme were received.
37. A meeting was held on the 13th June with a local land owner with regards to hedgerow boundary planting in areas where there is currently no hedging and also areas where there are gaps in existing hedges. This was very successful and over 900m of potential hedgerow planting was identified. Please refer to Appendix 9 - Hedgerow Planting Masterplan for details.

38. It should be noted that the Parish Council are in spate discussions with Northern Power Grid to develop screening proposals around the newly built substation along Moor Lane and is therefore outside the remit of this report.
39. The recommendations in this report are of a preliminary nature and are subject to consideration and comments from members of the community during the forthcoming Parish meetings. Changes can be made reflect the general census for the project.

North Yorkshire County Council

40. The highways department of North Yorkshire County Council has been contacted and a meeting was scheduled in July but unfortunately was cancelled by the council. To date, we are still awaiting a response for a date for the new meeting.

Further Funding

41. Woodland Trust has been contacted with a view to obtain some further funding for the hedgerow planting and infilling through their MOREhedge project. This can be addressed again when the scheme has been finalised.

Appendix 1: Visual Impact Plan

DRAFT

Appendix 2: Tree Planting Masterplan – Arkendale

Appendix 3: Tree Planting Masterplan – Coneythorpe & Clareton

Appendix 4: Avenue Tree Planting & Proposed Tree Removal – Arkendale

Appendix 5: Avenue Tree Planting – Arkendale



Appendix 6: Arkendale Tree Planting

Appendix 7: Tree Planting – Coneythorpe Village Green

DRAFT

Appendix 8: Bluebell Woods

DRAFT

Appendix 9: Hedgerow Planting Masterplan

DRAFT